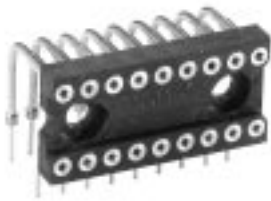


500 Series *Numerical Display Sockets*



518-AG7D



516-AG21D



508-AG8D

FEATURES:

Thomas & Betts offers a wide range of LED and ganged unit sockets to allow for total flexibility and size variations while incorporating the design features of our standard 500 Series sockets.

- Two-piece tapered entry socket terminal — four-fingered, gold plated inner contact and machined tin/lead plated outer sleeve.
- Available in either solderless wrap or printed circuit termination.
- Horizontal or right angle mounting.

MATERIAL SPECIFICATIONS (Figures 1, 2, 3):

Inner Contact Four-fingered beryllium copper, gold
Outer Sleeve Machined brass, tin/lead plated
Insulator Thermoplastic polyester UL rated 94V-0

MATERIAL SPECIFICATIONS (Figure 4):

Inner Contact Four-fingered beryllium copper, gold
Outer Sleeve Brass, tin/lead plated
Board Glass epoxy, tin-plated copper circuitry
Terminal Phosphor bronze, solder-coated
Spacer Delrin

PERFORMANCE SPECIFICATIONS:

MECHANICAL

Vibration Passed MIL-STD-1344, Method 2005.1, Condition II, 10 G's
Shock Passed MIL-STD-1344, Method 2004.1, Condition C, 100 G's
Durability Passed MIL-STD-1344, Method 2016
Normal Force 200 Grams (7.0 oz.) average with .018" (0,46) dia. polished steel pin
Insertion Force 179 Grams (6.3 oz.) average with .018" (0,46)" dia. polished steel pin
Withdrawal Force 63 Grams (2.2 oz.) average with .018" (0,46) dia. polished steel pin
Solderability Passed MIL-STD-202F, Method 208
Sleeve Retention
in Plastic 3.5 Lbs. per line minimum solderless wrap;
3.0 Lbs. PC tail
Inner Contact
Retention 7.5 Lbs. per line average

ELECTRICAL

Contact Resistance 10 Milliohms
Contact Rating 3 Amps
Capacitance 1.0 pF per MIL-STD-202, Method 305 (contact to contact)
Insulation Resistance 5,000 Megohms min. @ 500 VDC per MIL-STD-1344, Method 3003.1
Dielectric Withstanding
Voltage 1,000 Volts RMS per MIL-STD-1344, Method 3001.1

ENVIRONMENTAL

Humidity Passed MIL-STD-1344, Method 1002.2, Cond. II
Thermal Shock Passed MIL-STD-1344, Method 1003.1, Cond. A
Operation Temperature .. Gold inner contact -55°C to +125°C
Tin/lead inner contact -55°C to +105°C

Angle Mount DIP Sockets 500 Series

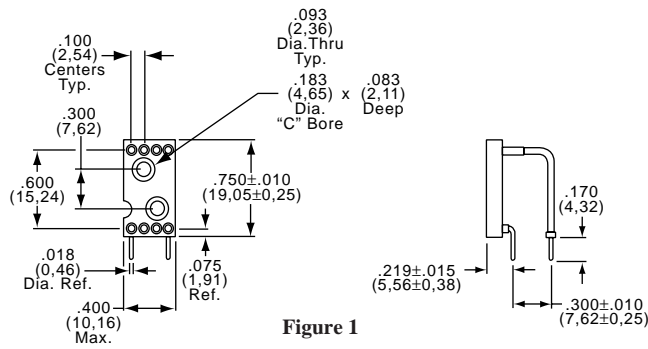


Figure 1

PART NUMBERS / STANDARD CONFIGURATIONS

Part Number	Figure	Number of Contacts	Description
508-AG8D	1	8	Right angle mtg., printed circuit
508-AG4A	2	8	Horizontal mtg., solder pocket
508-AG4F	2	8	Horizontal mtg., 3 level solderless wrap

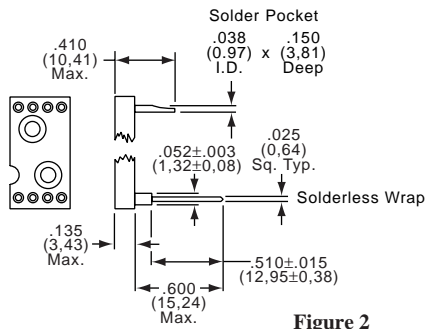


Figure 2

PART NUMBER / STANDARD CONFIGURATIONS

Part Number	Number of Contacts	A Max.	B	Description
508-AG7D	8	.400 (10,16)	One Hole Only	Right angle mtg., printed circuit
514-AG7D	14	.700 (17,78)	.400 (10,16)	
516-AG7D	16	.800 (20,32)	.500 (12,70)	
518-AG7D	18	.900 (22,86)	.600 (15,24)	
520-AG7D	20	1.000 (25,40)	.500 (12,70)	

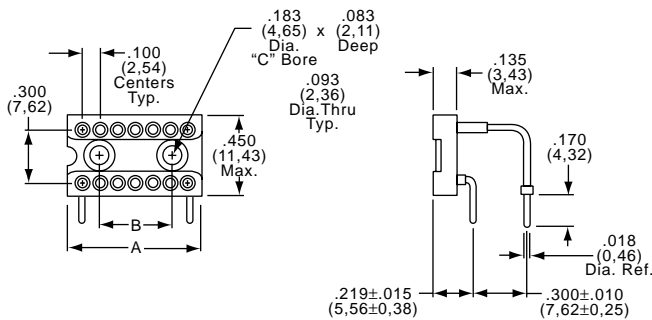


Figure 3

Horizontal Right Angle

PART NUMBER / STANDARD CONFIGURATIONS

Part Number	Number of Contacts	"A" Max.	"B" Max.	"C" Max.
514-AG21D	14	1.100 (27,49)	.900 (22,86)	.700 (17,78)
516-AG21D	16	1.220 (30,99)	1.010 (25,65)	.800 (20,32)

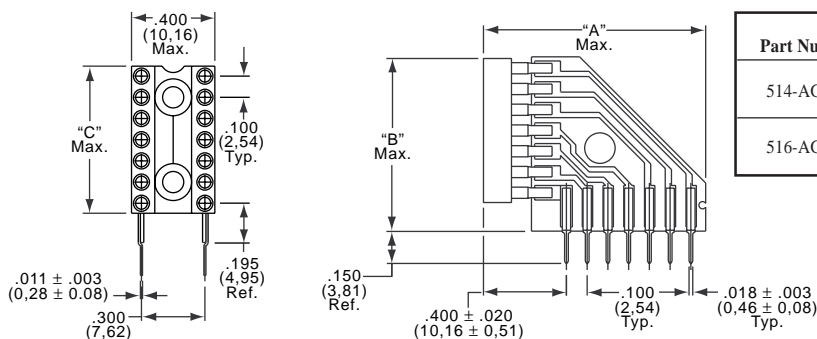


Figure 4

Vertical Right Angle

Need more technical information?

Consult your Thomas & Betts sales office listed on the back cover